

**NMRA**



## **THE BRASS POUNDER**

Newsletter of the Carolina Southern Division 12, Mid-Eastern Region, National Model Railroad Association

### **Superintendent's Corner**

By Chad Barnette

#### **Division Coming Events**

#### **RMU - Railroad Modeling University**

**West Concord Baptist Church - 225 Warren C Coleman Blvd, Concord, NC 28027**

**Saturday April 18th 9:00am**

Happy April everyone! Springtime is among us and I can't help but feel the excitement of everything being made new again. With spring here and Easter upon us we are reminded that what's old can be made new. You can see where I'm going with this can't you? Yes, of course! Our favorite hobby - those projects locked away for winter (or multiple winters, question mark) are ready to be made new again. What project is that for you? Why not set a goal for yourself today to get some portion of that project done within the week. Now, time to pick what I will choose....

Well, it's also that time of year. **RMU - Railroad Modeling University** - is coming up in two short weeks on Saturday April 18th. We have some great classes lined up and all the regular hits you expect to be there will be there. Now all we need is you! Make sure to sign up today! And don't worry - if you can't make it for the whole day, at least drop in for a single class. No rules, just a good time with fellow model railroaders.

---

## Editor's Notes

By Chad Barnette

Hey everyone - I'm running my same editorial from last month. I received only one submission from this request (thank you!) but I think we could do better this time around!

Gather 'round! It's time to expand our offering with the Brass Pounder. I want everyone in our division to feel like they play a part in our monthly publication. Here are a few ways YOU can get involved:

1. Send in photos of your workspace. I'd like to bring back our segment where we display one another's workspaces - could be for any reason. You like your setup, you think it's crazy looking and think it'd be comical to share, or you simply appreciate the fact that we want to hear from everyone. Send 'em in!
2. Tools, tips, and tricks. Any small little trick that you employ to make things easier? We want to share it with the group. It can just be a photo you send me of a tool, a picture of a new paint application or weathering technique, or just a product name ("Hey Chad, I really like \_\_\_\_\_ and think everyone else might too").
3. Whatcha workin' on? I would like to do a section highlighting what folks are working on each month. It's just a one pager (mostly a photo) with a few sentences describing what you're working on. For example, it might be "here's my layout. I just started and here's the space I plan to use. Thinking of using Peco track and modeling the 1960's in Springfield, Illinois."

Click the link to email me:

[editor@carolinasouthern.org](mailto:editor@carolinasouthern.org)



## Division and Regional News

---

### Wade's Train Town

#### Wade's Train Town – March Stats

Contributed by Ed Smith, MMR

**Open houses:** 5

**Attendance:** 139

**Volunteers:** Tim Rust, Chad Barnette, Joe Pulsone, Bob Halsey, and Ed Smith [2]

We had an extra day, Friday the 13th, for the dedication of the mural that was painted on the side of our building. Come check it out!

### AP Updates from the Plywood RR Desk

Contributed by Neal Anderson, MMR



April Splinters

Dylan Petro has turned in his paperwork on Scenery AP

I will be working with Dave Chance on getting some AP's done

P.S. What would you think about an RMU Class on Chief Dispatcher?

I will need an early response so I can set it up with the Dean.

# March Meeting Notes

Contributed by David Myers, CSD Clerk

Carolina Southern Division, Mideast Region  
National Model Railroad Association  
Monthly Meeting  
March 21, 2026

Matthews Public Library, Matthews, NC  
Attendance: 14 in person, 10 online

The Superintendent called the meeting to order at 10:04.

The Superintendent opened the meeting with a discussion of the Railroad Model University (RMU) that is planned for April 18, four weeks away. Alan Hardee is RMU Dean this year. Alan is recruiting clinic presenters and noted that anyone interested may contact him directly at [RMUDean@carolinasouthern.org](mailto:RMUDean@carolinasouthern.org). A "White Elephant" room is planned. A room where models may be presented for evaluation will be available.

The Superintendent shared that he has prepared a calendar of nearby model railroading events and it will be available on the CSD website.

Neal Anderson presented an update on the Achievement Program. Achievement Certificates were presented to: Andrew Stitt, Association Official; Scott Davenport, Civil Engineer; Dylan Ptero, Scenery. Neal had Merit Awards for Tim Rumph, Joe Trzybinski, Dave Smith, and Brad Jones.

Joe Skorch told the meeting that he will be offering another switch building class in the near future.

The Superintendent conducted a railroad trivia contest that was enjoyed by all.

The Superintendent opened a modeling demonstration and discussion session. Chad Barnette discussed his lessons learned while ballasting and applying ground foam. Several attendees offered their own lessons learned and solutions to some of the problems discussed. Dave Smith displayed an example of forced perspective and discussed his techniques and materials in its construction.

The Superintendent announced the next meeting will be RMU on April 18 at 9:00 am at the West Concord Baptist Church. The May meeting will be the train show at the NC Transportation Museum in Spencer. The June meeting is tbd.

There was no other business.

The Superintendent adjourned the meeting at 11:27.

Submitted by,  
David Myers, Division Clerk

# RMU

## RAILROAD MODELING UNIVERSITY

LEARN • BUILD • CREATE • SHARE

**GREAT TRAINS**  
ENDLESS POSSIBILITIES  
**GREAT PEOPLE**

**MANY CLASSES TO CHOOSE FROM**  
*on a variety of model railroading topics*

- ★ LAYOUT DESIGN & CONSTRUCTION
- ★ TRACK PLANNING & WORK
- ★ SCENERY & DETAILING
- ★ STRUCTURES & KITBASHING
- ★ DCC & ELECTRICAL SYSTEMS
- ★ ROLLING STOCK & WEATHERING
- ★ AND MUCH MORE!

**THERE'S ALWAYS SOMETHING NEW TO LEARN!**

**WHITE ELEPHANT ROOM**  
GREAT DEALS, HIDDEN GEMS, & NEW FINDS!

ONE PERSON'S CAST-OFF IS ANOTHER'S TREASURE

**T-TRAK LAYOUT**  
SMALL MODULES, BIG POSSIBILITIES, ENDLESS CREATIVITY!

**LOTS OF FUN with Friends!**  
SHARE IDEAS, GET INSPIRED, BUILD MEMORIES!

**JOIN US!** **SATURDAY APRIL 18<sup>TH</sup>** **9:00 AM**

**WEST CONCORD BAPTIST CHURCH**  
225 Warren C Coleman Blvd, Concord, NC 28027

**REGISTER ON THE CAROLINA SOUTHERN WEBSITE**  
[carolinasouthern.org](http://carolinasouthern.org)

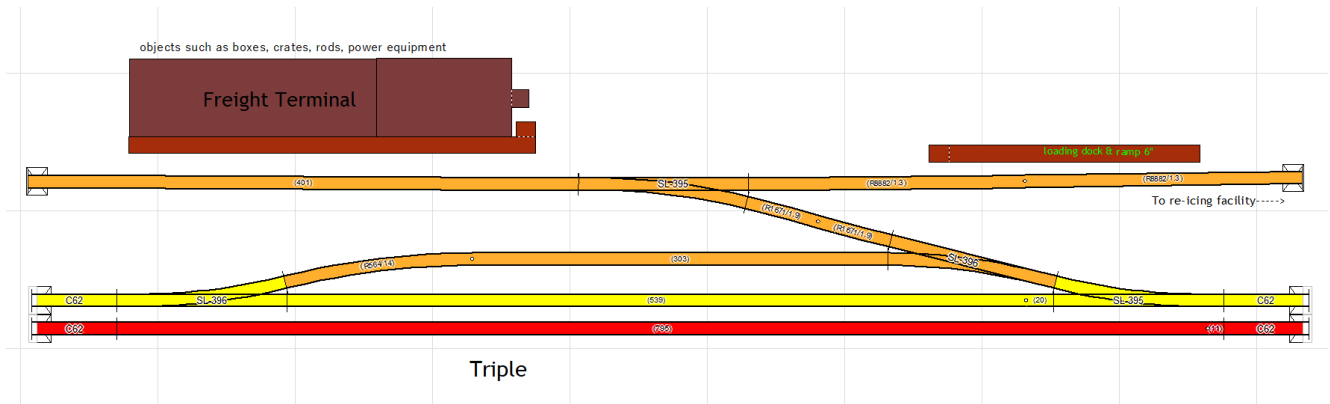
[Register Now - Click This Link!](#)

# The Future of My T-Trak Layout

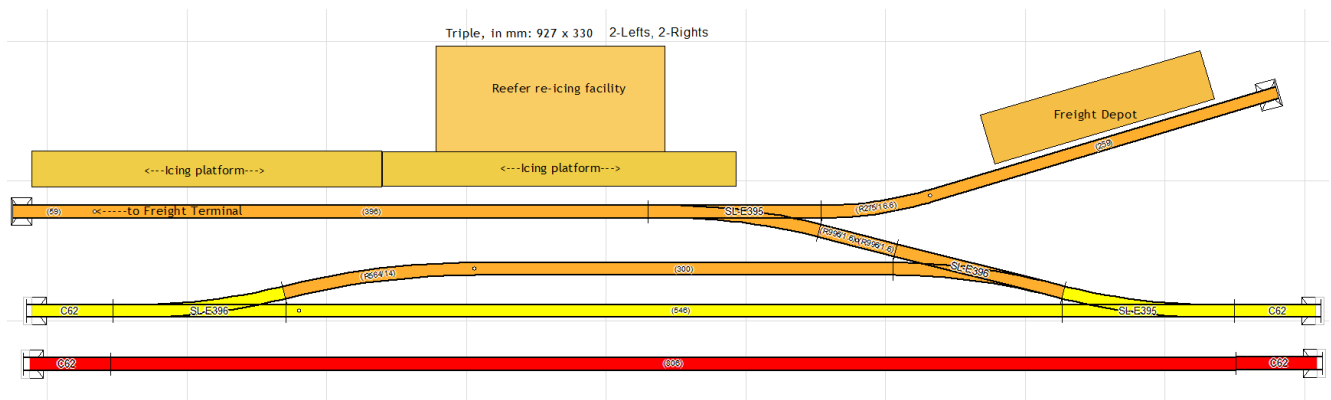
Contributed by Dylan Petro

## PHASE III: Industries

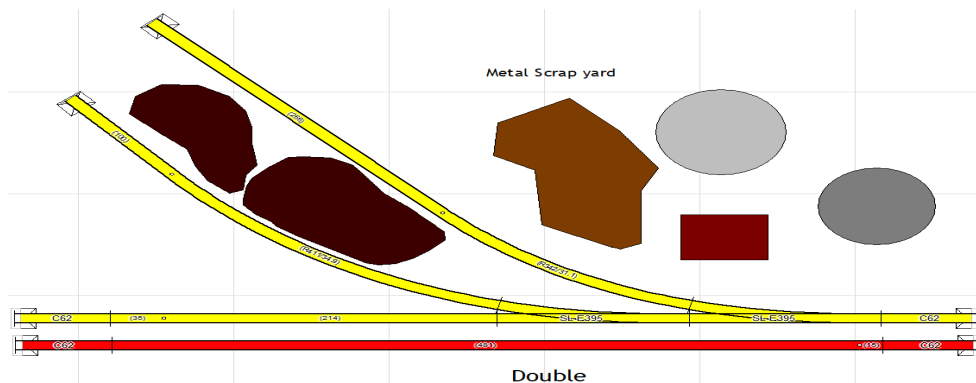
The third and final phase will consist of adding four new industries to my layout so I can do operations. Two doubles and two triples. The four industries (in picture order) are a freight terminal with a loading dock, a reefer re-icing facility with a small depot, metal scrapyard, and a manufacturing plant with a maintenance shop. I picked these as they'll add plenty of variety for the cars I already own. Since I model the Southern Railroad for freight and passenger trains, as well as N&W for coal, my goal is to model certain locations along their routes as many model railroaders do. The freight terminal will be vaguely similar to the one that operated in Durham NC. So, it'll be called Durham Freight Terminal. The building that will be used is the Walthers Water Street freight terminal. The loading dock will be a Blair Line wood kit. This and the reefer icing facility will be connected to each other as a set to aid in switching and train run-arounds.



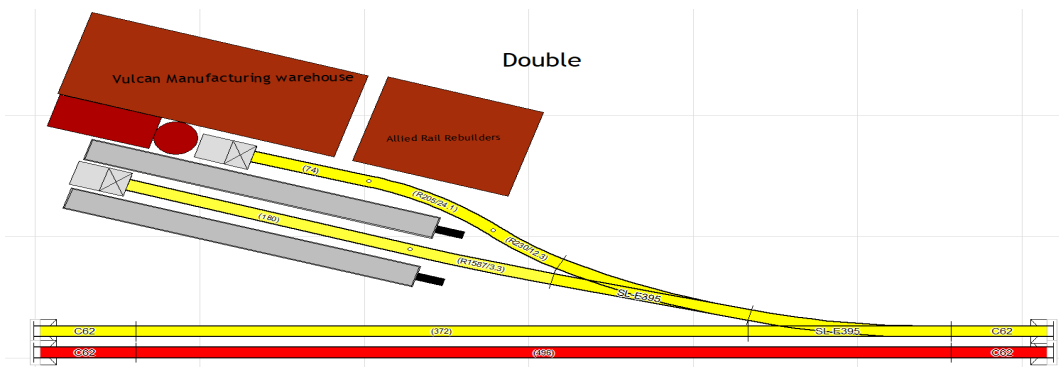
I'll be using similar setups with the reefer re-icing facility and freight terminal to allow for maximum track usage and keep the buildings on the back end. I'm not quite sure yet if I'll use a backdrop for the doubles & triples yet, as I'm not a fan of using them unless I need the backdrop to incorporate itself into the scene like I did with the Coal mine module. The rolling stock that will be used are wood-sided reefers, wooden vinegar tankers, 40' boxcars, flat cars, gondolas, and 3-bay hoppers. The re-icing facility will be a Walthers kit. Not sure yet which wood kit I'll use for the small depot.



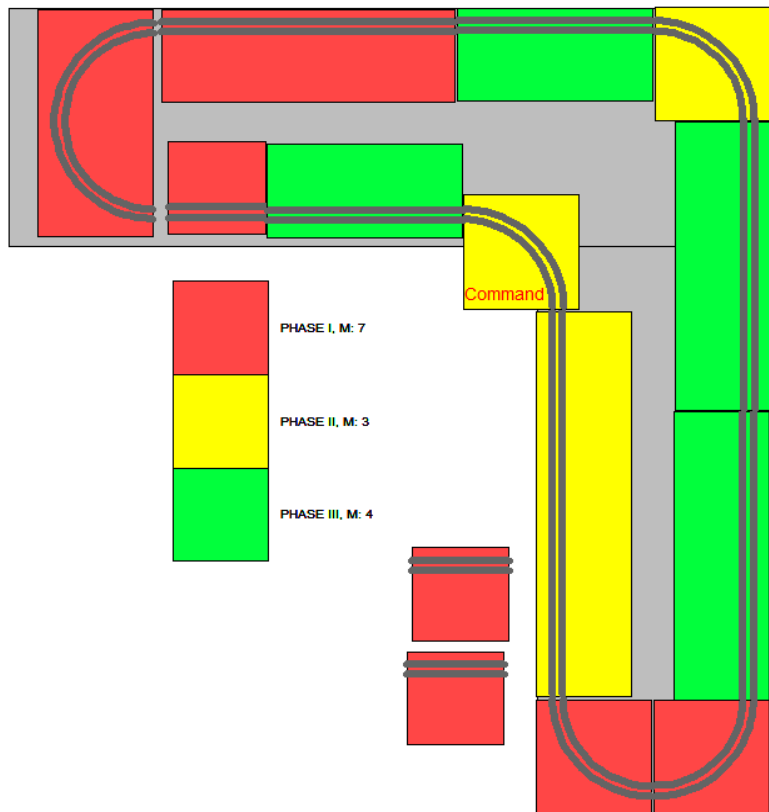
I won't know the exact car amount till I get the buildings and modules made and in front of me. So, for now, the car amounts are guessed. For the freight terminal and re-icing facility, I imagine it will hold 3 or 4 cars on the incoming and outgoing sidings, and 1 or 3 cars on the depot sidings. Each track end of the modules will be Kato transition pieces, and the rest of the track will either be code 80 Peco turnouts and Kato/Peco flex track. This way the siding lengths can be custom cut and fitted without having to deal with fixed standard Kato unitrack lengths. Buffer wise, I've seen 3D printed buffers on eBay, but I more than likely will make them myself since I have plenty of balsa wood and other random materials lying around to use. One thing I really look forward to using on the turnouts are manual ground throws. Since Kato turnouts have proven to be troublesome no matter which ones I use, they have quite unreliable to use on these modules. I'm hoping the Peco turnouts that are manual throws and non-ballasted will work better as I will be using these tracks a lot.



For the scrapyard my goal is for it to be a gondola pickup destination before heading off to a steel mill. It will have piles of scrap metal as well as a place where railroad equipment goes to be torn down and added to the scrap. I have gathered quite a handful of old rolling stock pieces that I couldn't fix or some Great Northern steam engine tender parts from an old project of mine. Early on, I made a few scrap load gondolas specifically for the idea of doing a metal scrapyard industry at some point.



For the manufacturing plant, it will hold 2-3 flat cars or gondolas with metal products such as rails, sheet metal, and pipes. The siding next to the plant will also hold a boxcar for machine parts for either the plant or the maintenance shop, not actually of course, just imaginative. The building will be the Walthers Vulcan Manufacturing and Allied Rail Rebuilders kits. The module will be named Norfolk Innovations since its location is based off Norfolk & Western's many manufacturing shops in Roanoke.



After these are completed, I have no further plans for expansion. I have plenty to work with and add onto my previous, current, and upcoming modules. I have maxed the space for the layout in our apartment and I don't want any more modules since I can do a few figurations with what I have now, such as a simple oval, small L, or an A-to-B switching layout. I look forward to these industries as they will add more switching opportunities to my T-TRAK

layout, as well as more entertainment for anyone who may visit. My progress on the upcoming modules will be given in later articles.

## Help Wanted

Contributed by Chad Barnette

**CSD Program Chair** – The Division needs someone to take on the responsibility of arranging for programs to be scheduled and presented at Division meetings. This can be accomplished by doing the presentation themselves, getting a commitment from someone else to make the presentation, or arrange for presentations to be conducted remotely (via Zoom). When the presentation has been established, the who, what, when, where needs to be sent to the editor of the Brass Pounder and the webmaster prior to the meeting so they let the members know about the upcoming program.

**RMU Chair** – The Division conducts Railroad Model University (RMU) annually to provide all model railroaders within our area the opportunity to attend a day-long event featuring clinics on a wide range of model railroad topics. The chair is responsible for recruiting member and non member clinician presenters as well as setting the schedule for these presentations. The chair also coordinates with other Division members to enable them to secure a location for the event, schedule and promote the event, and assist with any registration or A/V issues.

Please contact me ([superintendent@carolinasouthern.org](mailto:superintendent@carolinasouthern.org)) if you have any questions or would like to volunteer.



## **RPM Carolinas**

May 2-3, 2026

9140 Arrowpoint Blvd. Suite 140

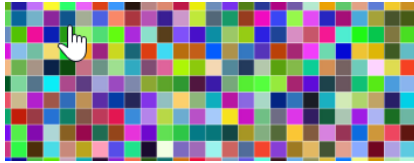
Charlotte, North Carolina, USA

## **Carolina Model Railroaders**

- Friday Setup: April 17th – 5:00PM until 8:00PM

- Saturday Setup April 18th – 7:00AM until 8:45AM

First Baptist Church, 1000 W Friendly Ave, Greensboro, NC 27401.



## **Digital Distractions**

Brightline West is turning the aviation industry on its heels. Yes, that's right. Rail is giving the airlines a run for their money. Take a look at Brightline West - it's a very interesting project if you're not already familiar. I wonder if any folks in our division have modeled anything that's quite this modern.



Check out the Brightline page [here!](#)

### **Division Brass**

|                                    |                    |  |
|------------------------------------|--------------------|--|
| <b><u>Superintendent</u></b>       | Chad Barnette      | <a href="mailto:superintendent@carolinasouthern.org">superintendent@carolinasouthern.org</a> |
| <b><u>Asst. Superintendent</u></b> | Richard Shulby     | <a href="mailto:assistsuper@carolinasouthern.org">assistsuper@carolinasouthern.org</a>       |
| <b><u>Clerk</u></b>                | David Myers        | <a href="mailto:clerk@carolinasouthern.org">clerk@carolinasouthern.org</a>                   |
| <b><u>Paymaster</u></b>            | Tim Rumph          | <a href="mailto:Paymaster@carolinasouthern.org">Paymaster@carolinasouthern.org</a>           |
| <b><u>Director 2028</u></b>        | Alan Hardee        | <a href="mailto:director1@carolinasouthern.org">director1@carolinasouthern.org</a>           |
| <b><u>Director 2029</u></b>        | Joe Skorch         | <a href="mailto:director2@carolinasouthern.org">director2@carolinasouthern.org</a>           |
| <b><u>Director 2027</u></b>        | Ed Smith, MMR      | <a href="mailto:director3@carolinasouthern.org">director3@carolinasouthern.org</a>           |
| <b><u>AP Chairman</u></b>          | Neal Anderson, MMR | <a href="mailto:Apchair@carolinasouthern.org">Apchair@carolinasouthern.org</a>               |
| <b><u>Webmaster</u></b>            | Joe Skorch         | <a href="mailto:Webmaster@carolinasouthern.org">Webmaster@carolinasouthern.org</a>           |
| <b><u>Newsletter Editor</u></b>    | Chad Barnette      | <a href="mailto:editor@carolinasouthern.org">editor@carolinasouthern.org</a>                 |
| <b><u>Program Chair</u></b>        | Still Looking!     | <a href="mailto:program@carolinasouthern.org">program@carolinasouthern.org</a>               |
| <b><u>RMU Chair</u></b>            | Alan Hardee        | <a href="mailto:RMUchair@carolinasouthern.org">RMUchair@carolinasouthern.org</a>             |